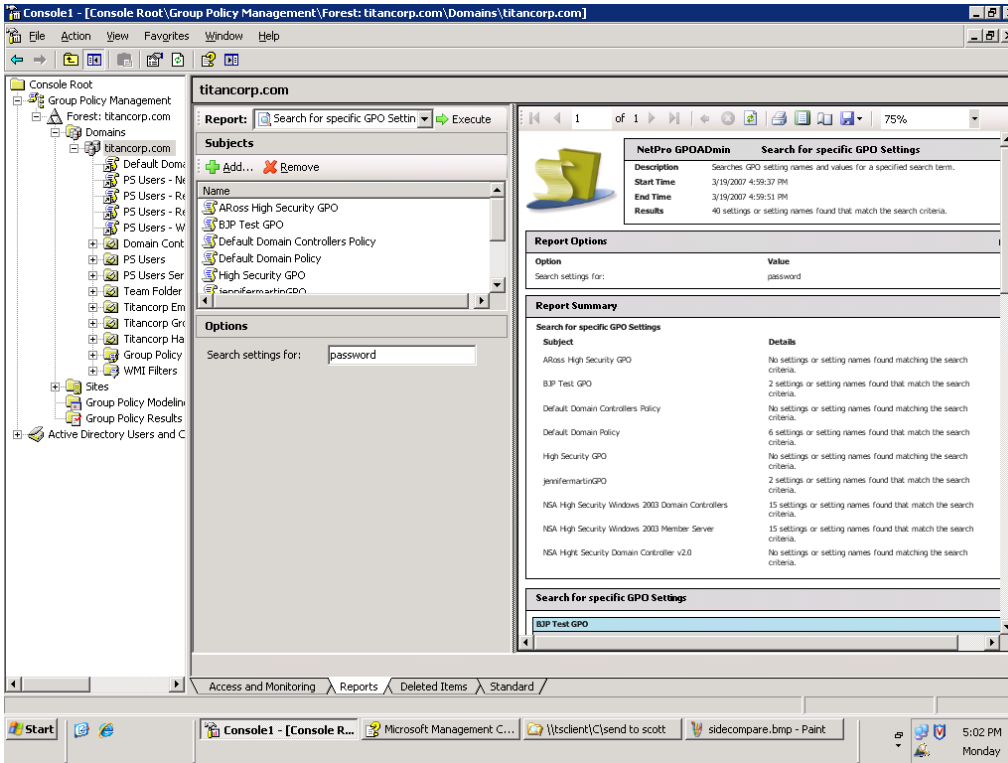




GPOADmin

Simplified Group Policy management and administration



GPOADmin snaps into Microsoft's Group Policy Management Console (GPMC) to help streamline and automate critical tasks and provide enhanced auditing, version control and reporting capabilities

The Challenge:

As one of the most robust configuration tools in your Windows infrastructure, Group Policy plays a major role in establishing a secure and compliant networking environment for your users. But with Group Policy regulating everything from critical business processes and security settings to individual workstations and printers, managing and administering Group Policy Objects (GPOs) can become a time-consuming and expensive task without the right tools.

The Solution:

NetPro's award-winning GPOADmin reduces the costs and manual processes of Group Policy management by automating the administration of critical tasks. GPOADmin boosts the power of Microsoft's Group Policy Management Console (GPMC), so you can verify and compare GPO changes over time or confirm the consistency of different GPO settings. Compare two GPMC backups, a GPMC backup and an active GPO, two active GPOs within or across domains, or varying versions of a single GPO at different times. With so many GPO comparison features combined with enhanced security capabilities, you'll drive unparalleled control and efficiency into the management of your Windows servers and desktops.

Key Features:

- Seamlessly integrates with the Microsoft Group Policy Management Console (GPMC)
- Provides improved auditing for changes to GPOs
- Enables advanced, side-by-side GPO version comparisons
- Features automated GPO version control
- Hides pre-production GPOs so only desired administrators can view and approve them
- Provides GPO locking to prevent unwanted changes to production GPOs
- Enables GPO backup and link restoration
- Provides GPO check-in and check-out to prevent simultaneous editing conflicts
- Allows advanced GPO searching and reporting:
 - Specific GPO settings
 - Unlinked GPOs
 - Cross domain linked GPOs
 - Ineffective GPOs



Key Benefits:

- Closes the gap in the native GPO management processes by automating critical tasks
- Helps prove regulatory compliance with advanced GPO auditing and tracking
- Integrates with existing Microsoft tools, eliminating the need to learn a third-party interface
- Drives availability with advanced backup and rollback capabilities
- Saves valuable time and reduces risk of outages by eliminating scripts and manual processes
- Reduces total cost of ownership (TCO) by centralizing desktop management
- Simplifies the enforcement of enterprise-wide business policies by enabling streamlined GPO control
- Drives network security by restricting access to production GPOs

Contact Us:

NetPro US Headquarters
4747 N. 22nd St., Suite 400
Phoenix, AZ 85016
800.998.5090
1.602.346.3600
sales@netpro.com
www.netpro.com

**Please visit our website for International contact information.*

Improves and Simplifies Native Group Policy Capabilities

GPOADmin extends the power of the Microsoft GPMC, eliminating the need to learn yet another third-party interface. With no need for scripting or manual processes, you can save valuable time, reduce the risk of network outages, and drive improved server and desktop management throughout your entire enterprise.

Streamline Compliance with Improved GPO Auditing

Effective Group Policy auditing reduces security breaches, eases regulatory compliance requirements, and increases the overall reliability of your Windows infrastructure. GPOADmin integrates seamlessly with current processes to ensure critical tasks such as version control and auditing are performed efficiently and effectively. And, GPOADmin automatically ensures that all GPO versions and edits are recorded, creating a log of each setting change—as well as the individual who executed the change—for audit and rollback purposes.

Compare Different Versions of GPOs for Improved Consistency

Whether you need to verify GPO changes over time or validate the consistency of multiple GPO settings, GPOADmin provides a robust set of required GPO comparison features. Compare two backup versions, a backup and an active GPO, or two active GPOs, both within and across domains. Using advanced logic, GPOADmin allows you to perform these complex comparisons, and others, in less time than you ever thought possible.

About NetPro

NetPro gives you unprecedented control over your Microsoft Windows infrastructure with software solutions built with decades of industry leadership. More than 6 million users – from such respected organizations as Coors Brewing, the U.S. Army, and General Motors – look to us for their security and compliance, identity and access, and infrastructure management needs.

Type	Number	%
Added Settings	2	9.52
Changed Settings	6	28.57
Identical Settings	11	52.38
Removed Settings	2	9.52
Total Settings	21	100.00

GPOADmin lets you perform side-by-side comparisons of multiple Group Policy Objects. Compare two backup versions, a backup and an active GPO, or two active GPOs, both within and across domains.

With GPOADmin you can easily roll back Group Policy Objects to their previous versions, eliminating any ill effects of an undesired change.

Rollback Group Policy Object Settings

This will roll back the settings for the Group Policy Object 'NetPro SecurityManager Template' to the version created on 4/5/2006 2:59:18 PM by user NETLAB\Administrator. Are you sure?

Rollback Settings Options

Create a new version of the GPO with these settings

Rollback the settings to this version, and delete any newer versions

Please enter a comment for this rollback:

The previous setting change was in conflict with one of the required financial application settings. See support ticket # NPHQ-T5-791235 for more details.

OK Cancel