

How can I maintain the level of security when Linux is used on workstations?

Companies often have a **heterogeneous environment**, where the needs of each workgroup are set out by the operating system used at a given time, such as Linux systems where Windows files, which could be infected, are transferred via email.

The mistaken belief that Linux does not have any **vulnerabilities** or that it is not the target of attack, along with the difficulties involved in installing Linux on workstations means that these computers are sometimes left unprotected. This decision puts the **security** of the entire company at risk, as it opens an entry-point for malware.

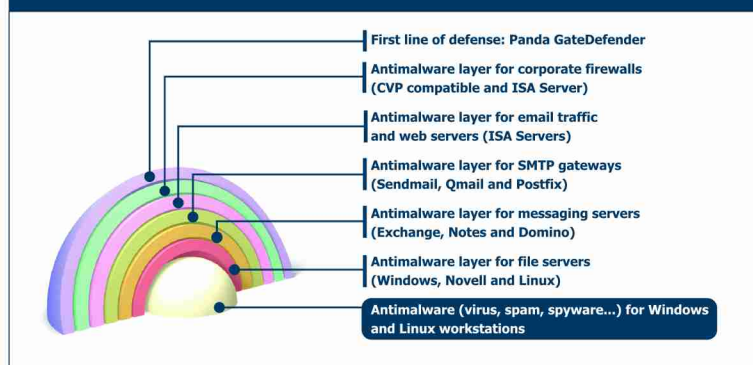
Protection designed exclusively for Linux workstations

Panda DesktopSecure for Linux is the ideal solution for companies with Linux distributions installed on their workstations. It is designed to respond to the **specific demands** of desktop computers running this operating system.

This powerful solution incorporates, in an **intuitive graphic interface**, antivirus technologies, heuristic technologies and a firewall aimed at protecting Linux computers from malware, and preventing these computers from being used as a gateway to spread infections across the Windows workstations in the local network.

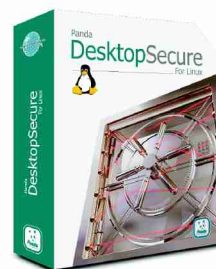
Layered preventive protection strategy

Panda DesktopSecure for Linux protects workstations against viruses and intruders.



Main benefits

- **Prevents loss of data** caused by hacker attacks and all types of malware that get into workstations.
- **Protects your external communication**, whether by e-mail, Internet or other applications.
- **Improves productivity**, thanks to its ease-of-use and automatic updates.



Key features

- **Anti-malware protection** against both Windows and Linux threats, including dialers and spyware.
- **Mail protection.** Resident mail protection that scans and disinfects mailboxes in the most widely used mail clients, such as Ximian or Mozilla.
- **Ease of use.** Designed to maximize use of your time, allowing you to find out the status of the protection at a glance, using the system self-diagnosis.
- **Powerful firewall.** From the X-Window interface you can configure communications, detect intruders and assign access grants to different programs.
- **Flexible updates.** The automatic update mechanism protects the user transparently.
- **Customized service.** Get advice about installation and a response to your queries and incidents within 24 hours.

Anti-malware protection

Panda DesktopSecure for Linux uses a signature file to detect viruses, worms, Trojans, **spyware** and dialers, neutralizing all types of malware regardless of its origin: Windows or Linux.

DesktopSecure also incorporates a latest generation and highly effective **heuristic** engine that can detect potential threats and block them until the disinfection routine is available.

Permanent mail protection

Email is the main means of propagation used by malware. It is essential to ensure that you have **permanent protection** that monitors the email messages sent to users' mailboxes in order to disinfect malware before it infects the file system.

DesktopSecure scans mail traffic in the most widely used clients, such as Ximian Evolution, Kmail, Mozilla Mail and Thunderbird; and clients compatible with 'standard Unix mailbox' format.

Ease of use

To ease implementation of the solution, **DesktopSecure** provides an intuitive graphic interface based on **X-Window**, which is totally compatible with the majority of distributions and desktops on the market, such as **Gnome and KDE**.

DesktopSecure also offers local warnings displayed in a pop-up window or sent via email, as well as a **self-diagnosis** system. This allows you to check the current situation at a glance or obtain reports and statistics for more detailed information about virus incidents.

Powerful firewall

DesktopSecure incorporates firewall technology that can detect intruders and network attacks, port scans and denial of service attacks, etc.

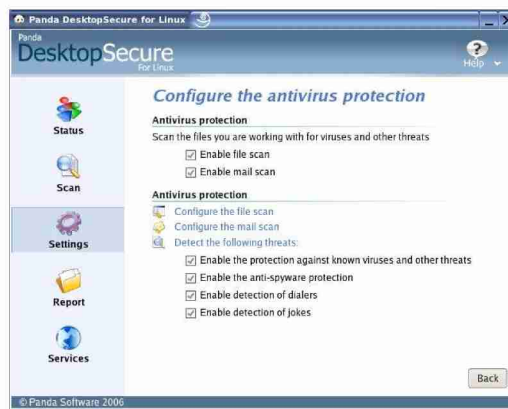
The **application rules** in **DesktopSecure** allow you to control the connection permissions assigned to the applications installed on a computer, as if they were a personal firewall.

This firewall can also be configured using **system rules** to administer external connections.

Flexible updates

DesktopSecure is updated automatically via the Internet and therefore, does not require additional files to be deployed.

The scans can be scheduled and the daily Malware Signature File updates can be configured, significantly **reducing the impact on communications**. What's more, these updates are incremental in order to reduce bandwidth consumption.



Finally, **DesktopSecure** includes a cache of the files scanned. This system improves the **performance** of the permanent protection so that it is almost imperceptible to the user.

Customized service

Clients of **DesktopSecure** licenses can access a wide range of complementary services that allow the product to adapt to their precise needs.

As well as the software upgrades and Malware Signature File updates, **DesktopSecure** also includes, at no extra charge, **24h-365d** telephone and email **Tech Support, SOS** service to analyze suspicious files and come up with a solution within 24 hours.

Technical requirements

Minimum requirements:

CPU: Pentium II 400+ MHz (or equivalent AMD).
RAM: 128 MB.
Disk space: 150 MB free space.

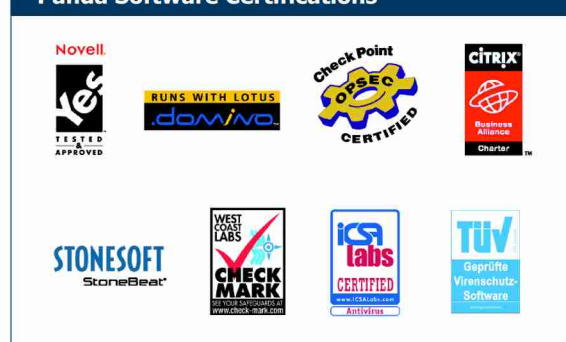
Recommended:

CPU: Pentium III 800+ MHz (or equivalent AMD).
RAM: 256 MB.
Disk space: 200 MB free space.

Operating system:

SuSE 9.2; Fedora Core 2; Fedora Core 3; Fedora Core 4; Ubuntu 5.10; Debian 3.1; Red Hat Enterprise Desktop 4.

Panda Software Certifications



Remember that **Panda DesktopSecure for Linux** can be purchased separately or as part of **BusinesSecure 2006** with **TruPrevent™** Technologies or **EnterpriSecure 2006** with **TruPrevent™** Technologies.

Panda Software and the Panda logo are registered trademarks of Panda Software. Other brands or product names may be registered trademarks of their respective owners.

© Panda Software 2006
0106-PS-DSKLI-I-01

Get your evaluation version of DesktopSecure for Linux
www.pandasoftware.com

