

Keep your company's email communication efficient and effective

Use of email has opened up access to information to the extent that **the volume of message traffic now threatens employee productivity**. Workers now receive numerous unsolicited messages (advertising, jokes, worms, spyware, phishing...) that try to trick the user in order to spread and bring financial returns.

This flood of messages also overloads communications and uses up workstation resources. For this reason, **PC email protection needs to be complemented** with a filter system that seamlessly integrates with Microsoft Exchange Server, to reliably eliminate these dangerous messages and guarantee effective email communication.

Eliminate email threats before they reach users

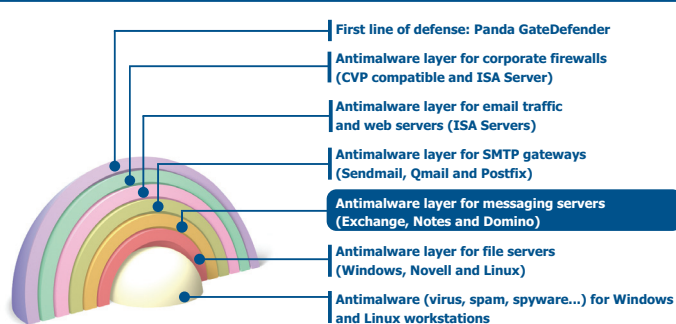
Panda ExchangeSecure frees up your Exchange Server from traffic overloads generated by junk mail, ensuring that inbound, outbound and internal email is free from malware.

The protection against spam blocks messages before they reach recipients' mailboxes. Offensive content is filtered out through an intuitive wizard combining our wide range of rules. Similarly, suspicious files are detected by the heuristic engine and sent to quarantine.

With attachments scanned in-memory, **ExchangeSecure** offers maximum performance both under individual installations and in Exchange Server clusters. **ExchangeSecure** provides the most complete functionality, using MAPI in Exchange Server 5.5, VSAPI 2.0 in Exchange Server 2000 and VSAPI 2.5 in Exchange Server 2003. It also integrates in the antispam infrastructure of Exchange Server 2003.

Layered preventive protection strategy

Panda ExchangeSecure protects your company's messaging servers.



Main benefits

- Decisively contributes to guaranteeing the **quality of the mail service** across the company.
- Maximizes email **communication security**, preventing the spread of infections.
- Boosts administrator and end-user **productivity**.

Key features

- **Complete, integrated protection** against all types of viruses, threats and intruders that infiltrate systems via email.
- **Seamless integration** in Exchange environments and fully cluster-aware.
- **Antispam protection** for all versions of Exchange, keeping junk mail from saturating inboxes.
- **Exhaustive content filtering** for preventative blocking of viruses and spam, in both inbound and outbound email.
- **Centralized, remote administration** with Panda AdminSecure.
- **Completely automatic** daily updates.
- **Optimized in-memory scanning and disinfection**, under any protocol and for all folders.
- **High scalability and availability** for large enterprise environments.

Complete, integrated protection against all kinds of threats

ExchangeSecure blocks threats that try to penetrate via email, such as viruses, worms, Trojans, spyware, adware, identity theft, dialers, jokes and hacking tools.

To prevent infections spreading out from email, **ExchangeSecure** uses a versatile malware detection and disinfection engine complemented by a new heuristic scanner which blocks and detects new viruses using statistical pattern analysis and neutralizes suspicious messages.

Seamless integration in all Exchange environments

ExchangeSecure is fully cluster-aware and supports 64-bit microprocessors, guaranteeing investment and compliance with performance and reliability requirements.

ExchangeSecure integrates seamlessly with all versions of the Exchange platform, using VSAPI virus scanning technology and the SCL (Spam Confidence Level) antispam system of Exchange Server 2003.

Efficient antispam protection

The antispam module identifies, blocks and destroys junk mail before it reaches mailboxes.

With more than 300,000 antispam algorithms and multi-functional techniques (rules, heuristic, Bayesian, lists and remote training), this new engine provides a reliable and effective way of dealing with spam. It is also possible to set a maximum number of recipients of a message in order to prevent massive attacks.

Optimized scanning and disinfection

Panda Software's *VirtualFile* technology scans all files in-memory, with faster results as it is not necessary to copy them to disk. **ExchangeSecure** also monitors messages in MAPI, POP3, and IMAP or SMTP protocols and can enhance scanning of HTML code to locate vulnerabilities, malware or filterable elements within an attached HTML file.

Exhaustive content-filter

ExchangeSecure not only filters content by sender, recipient, subject or message text, but also, in order to offer maximum effectiveness and versatility, includes a wizard for combining additional variables (name, extension, size, password protection, dangerous MIME types...).

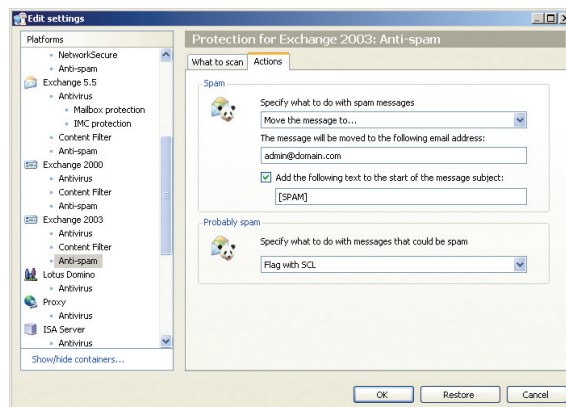
As a result, **ExchangeSecure** filters all type of content, without saturating server communications.

Completely automatic daily updates

ExchangeSecure updates automatically at least once a day. These updates are incremental, only downloading the file with the signatures that have appeared since the last update. In the event of a virus alert, this file can be patched immediately in order to detect the exploit and close down the risk window.

Remote, centralized administration

ExchangeSecure is managed centrally through **Panda AdminSecure**. This administration tool offers a complete system of real-time graphic reports, risk metrics and warnings.



High scalability and availability

Panda AdminSecure offers multiple views for remote management and updating of Exchange Servers via WAN connections. Its *UltraFast* scan engine offers maximum performance and has been optimized to provide non-stop protection for your mail traffic.

Technical requirements

For Exchange Server 5.5: Processor Pentium II 500 MHz (or later). 256 MB RAM. 50 MB free hard disk space. Operating system: Windows NT Server 4.0 (or later) with Service Pack 5 (or later) or Windows 2000 Server. Application: Microsoft Exchange Server 5.5 with Service Pack 3. Exchange cluster.

For Exchange Server 2000/2003: Processor Pentium II 500 MHz (or later). 256 MB RAM. 50 MB free hard disk space. Operating system: Microsoft Windows 2000 Advanced Server SP3 or later, Windows Server 2003/ R2. Applications: Microsoft Exchange Server 2000 with SP 1 (or later) or Exchange 2003, cluster included.

"The incorporation of content filtering features in Panda Antivirus for Exchange 2000 through the new Virus Scanning API (VSAPI) is an excellent way of protecting messaging infrastructures."
Kevin McCuiston, Product Manager, Microsoft Exchange Group, USA.

Panda Software Certifications



Powered by:



Remember! **ExchangeSecure** with **TruPrevent™ Technologies** can be bought separately or as part of **Panda BusinessSecure Exchange 2006** with **TruPrevent™ Technologies** or **Panda EnterpriSecure 2006** with **TruPrevent™ Technologies**.

Panda Software and the Panda logo are registered trademarks of Panda Software. Microsoft, Windows and the Windows logo are trademarks, or registered trademarks of Microsoft Corporation in the United States and/or other countries. Other names and products are registered trademarks of their respective companies.

© Panda Software 2006
0606-PS-EXS06-1-01

Get your evaluation version of ExchangeSecure
www.pandasoftware.com

