



A Quick Guide for Implementing SQL Manage Standard Edition

The purpose of this document is to guide you through the process of implementing SQL Manage on SQL Server databases. SQL Manage is a total management solution for Microsoft SQL Server database management, advanced backup, monitoring and alerts, and the resulting improvement in the performance of SQL Server databases.

Copyright 2007 FutureIT. All rights reserved. All trademarks, trade names, service marks and logos referenced herein belong to their respective companies.



Table of Contents

Getting started with SQL Manage	1
About SQL Manage	
The Benefits for SQL Server Users	
Fast Implementation	
Installation	2
Starting SQL Manage for the First Time.....	3
Fast Implementation: Applying Maintenance Suites.....	4
Customizing SQL Manage Settings for Databases	5
Description of the SQL Manage default settings for SQL Server.....	8
Starting the SQL Manage Agent Service	10
Activating the SQL Manage License	14
Technical Support	14



Getting started with SQL Manage

About SQL Manage

SQL Manage is an affordable, easy-to-use database management solution for Microsoft™ SQL Server databases. Providing comprehensive maintenance from a central console, SQL Manage automates traditional DBA tasks such as monitoring, re-indexing, backup & restore, to improve SQL Server performance, minimize downtime and reduce costs.

SQL Manage is a real "All-in-One" solution, allowing anyone with or without a technical background to effectively manage their SQL Server environment. It's like having your very own automatic DBA working around the clock to maintain and protect your data, so you can focus on what's really important to you: your business. SQL Manage is a Microsoft Platform Test approved solution.

With SQL Manage you enjoy enhanced performance, business continuity, higher availability, a dramatic decline in overhead and fewer failures, all of which will reduce your overall IT costs and guarantee you a speedy ROI and peace of mind.

The Benefits for SQL Manage Users

SQL Manage helps businesses in a number of ways, including:

- SQL Manage provides performance and availability savings for Microsoft™ SQL Servers.
- SQL Manage protects your business operations with an easy to use mechanism for back up, recovery and restore of critical business data.
- SQL Manage helps you avoid emergencies through monitoring and automatic alerts that notify of problems before they become catastrophic.

Fast Implementation

In order to help you more quickly improve administration of SQL Server databases, the Fast Implementation window (Page 4) automatically applies to databases full maintenance suites appropriate to applications such as SAP Business One.



Installation

If you have completed the installation process please proceed to the “Fast Implementation” on page 4.

- Implementation begins with downloading (<http://www.futureitsoft.com/downloads.aspx?page=Trial>) the two components of SQL Manage:
 - SQL Manage Agent Setup – A zip file containing the server side component of the SQL Manage Standard Edition application, to be installed on every computer with a Microsoft SQL Server that is to be controlled by SQL Manage. The SQL Manage Agent is responsible for sending notifications, shrinking databases and expiring old backup files.
 - SQL Manage Setup – A zip file containing the the client side component (the GUI) of the SQL Manage Standard application. It is to be installed on every desktop station that is used to control the SQL Manage services. SQL Manage console enables you to manage, maintain and monitor Microsoft SQL Servers.
- Install the applications from the zip files
 - Unzip each file to create the installation folders for SQL Manage Agent and SQL Manage.
 - Run the “setup.exe” file in the SQL Manage Agent installation folder & follow the Setup Wizard
 - Run the “setup.exe” file in the SQL Manage installation folder & follow the Setup Wizard

Starting SQL Manage for the First Time

- After installing SQL Manage, open the SQL Manage console (The SQL Manage user guide is available at: www.futureitsoft.com/downloads/SQL_Manage_help.pdf).
- On the system login dialog: click on the "browse" button to choose the server to connect to, or supply a server name manually.
- On the same dialog, supply your SQL credentials either through Windows Integrated security or the SQL Server login (SA). The latter is the recommended option.
- Click on "Login"



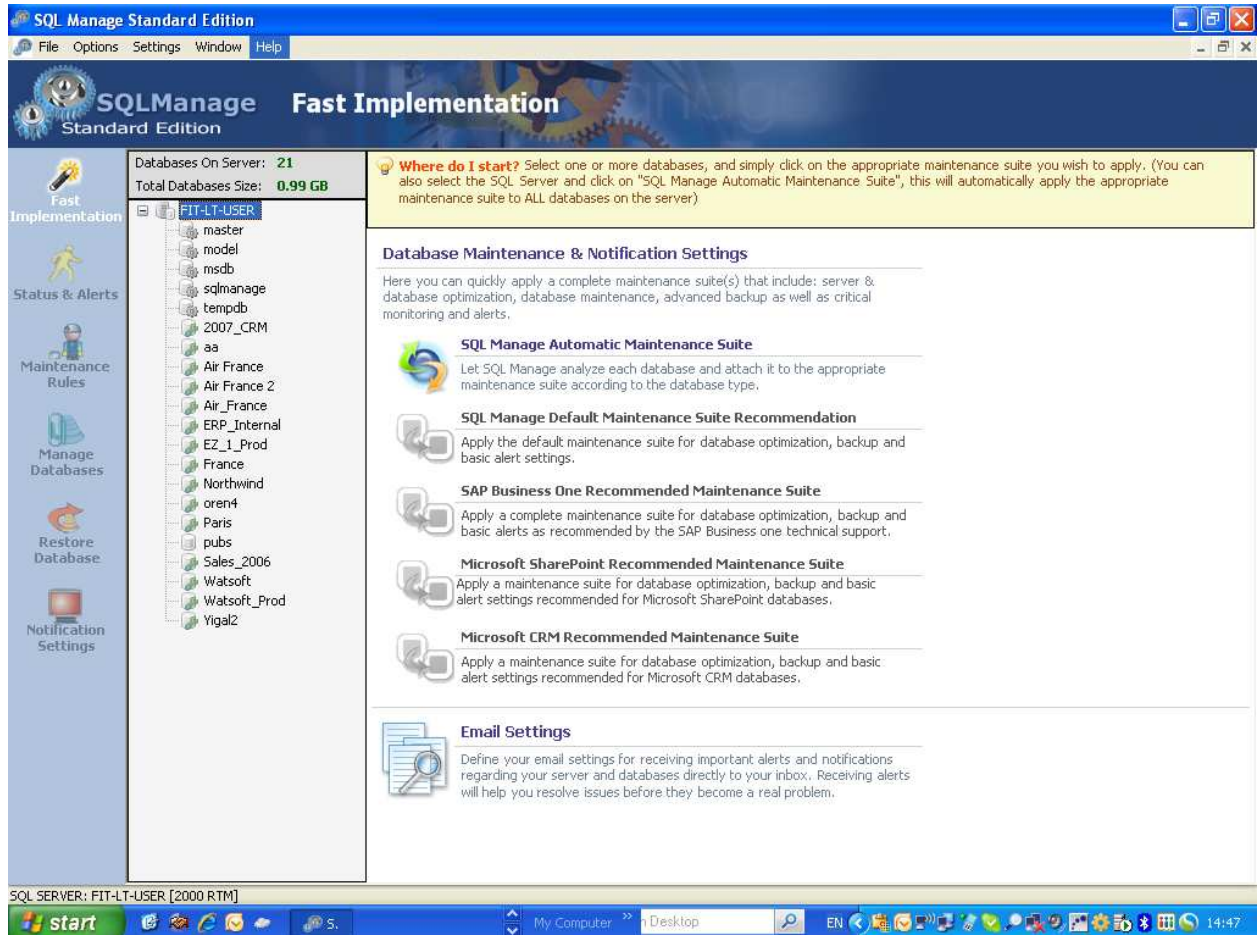
- When SQL Manage is started, look in the system tray (the right-hand side of the application bar) and check the SQL Manage Agent icon's status.



- If the icon is not green, the Agent has not successfully started. Please follow the instructions in Starting the SQL Manage Agent Service on page 10.

Fast Implementation: Applying Maintenance Suites

The first window in the application is the Fast Implementation window. A user may either select “SQL Manage Automatic Maintenance Suite” to analyze all databases on the server and apply appropriate maintenance suites or select individual databases from the server and apply appropriate maintenance suites.



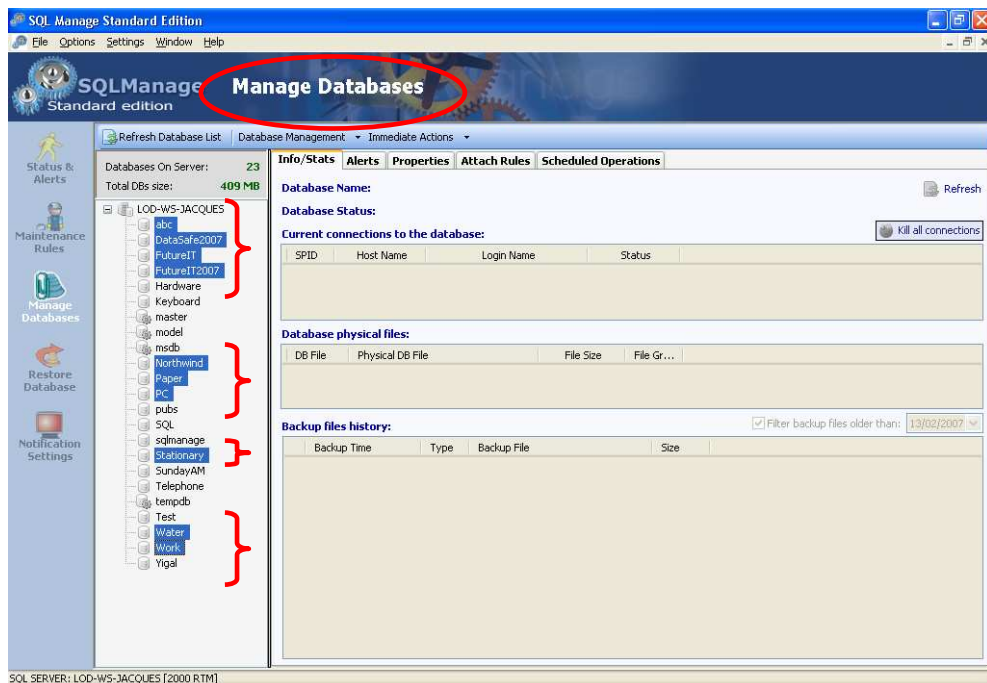
- In the Database tree, select either the entire server (as shown) or specific databases. To select more than one database, use the “ctrl” key while clicking on the databases to select.
- Choose the database maintenance suite to apply to the selected database(s).
 - The **SQL Manage Automatic Maintenance Suite** applies the appropriate maintenance suite according to each database’s type.
 - The **SQL Manage Default Maintenance Suite** applies a standard maintenance suite for SQL Server database optimization.
 - The **SAP Business One Recommended Maintenance Suite** applies a maintenance suite for SAP Business One.
 - The **Microsoft SharePoint Recommended Maintenance Suite** applies a maintenance suite for Microsoft SharePoint databases.
 - The **Microsoft CRM Recommended Maintenance Suite** applies a maintenance suite for Microsoft CRM databases.
- In addition, the screen has a link to set Email Settings in order to ensure prompt notification of SQL Manage alerts.

Customizing SQL Manage Settings for Databases

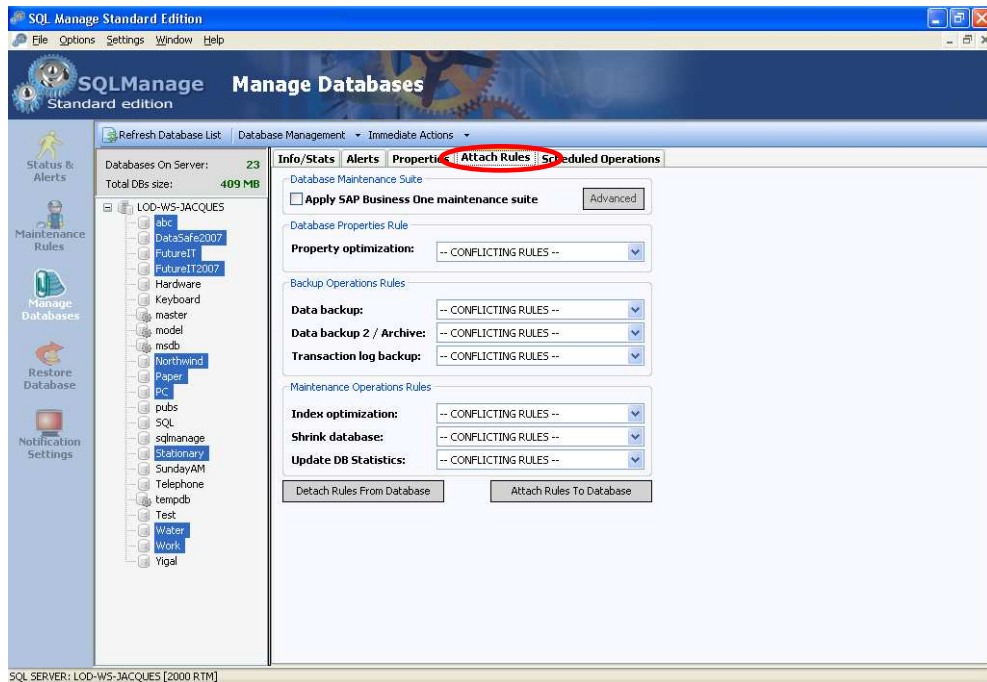
While the Fast Implementation rapidly initializes database management and control processes for each database on a server, advanced users may wish to customize settings for individual databases. That is accomplished from the “Manage Databases” window, accessible from the menu on the left-hand side of the application.

The following simple "one-click" process will associate the SQL Manage Default Maintenance Rules with the applicable SQL Server databases.

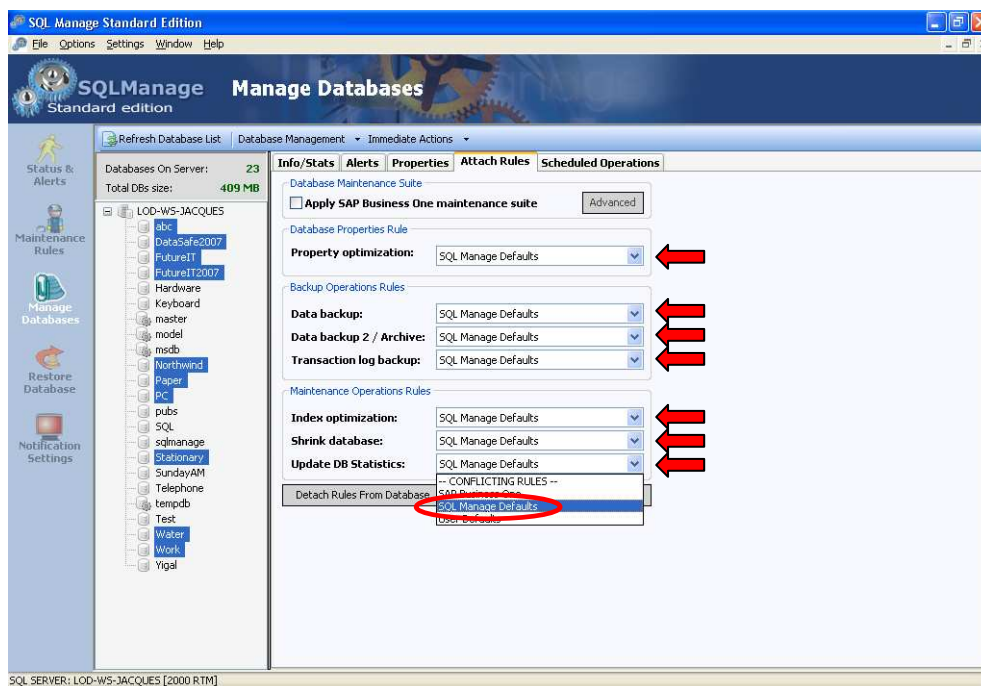
- On the "Manage Databases" screen, select the relevant database(s) on which you wish to apply the predefined SQL Manage Default Maintenance Rules (to select multiple databases, use the ctrl key).



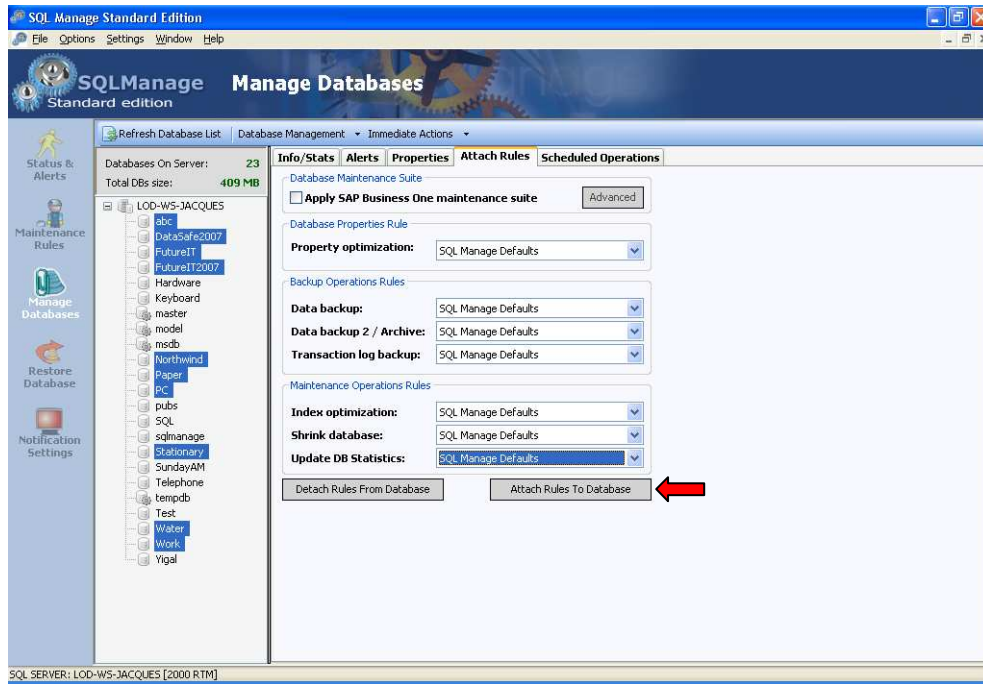
- Once you have selected the database(s), select the "Attach Rules" tab.



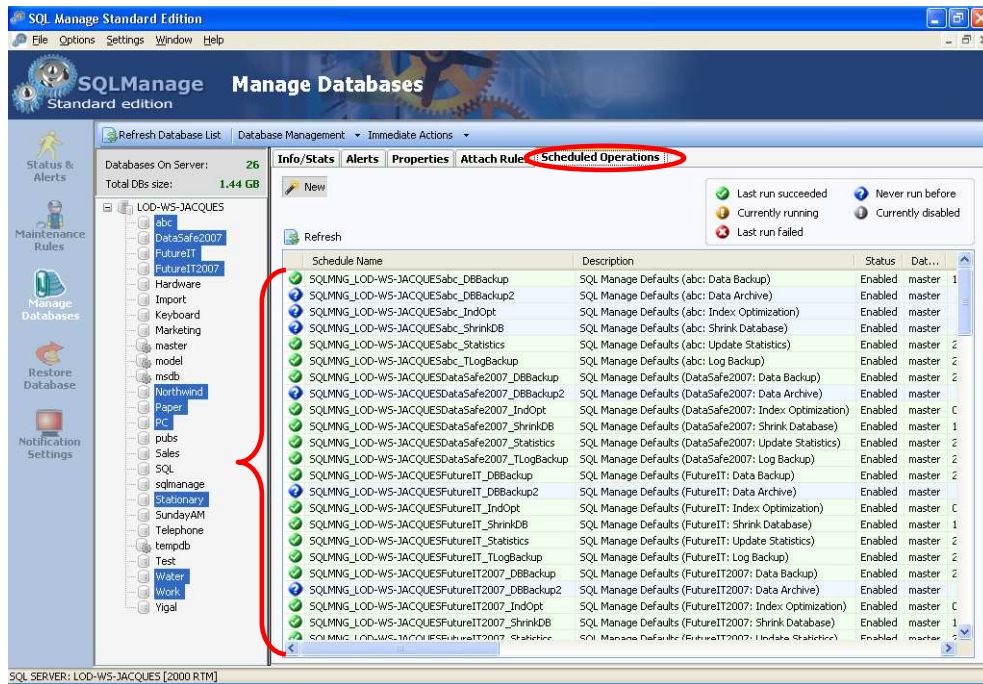
- Select "SQL Manage Defaults" from the "Database Properties Rule", "Backup Operations Rules" and "Maintenance Operations Rules" combo boxes.



- Then click on "Attach rules to Database".



- Proceed to click on the "Scheduled Operations" tab to view the attached rules.





Description of the SQL Manage default settings for SQL Server

Applying these rules will deploy the following settings for maintenance, alerts and backup on SQL Server databases. **Any one of the settings below can easily be changed manually according to your requirements on the "Maintenance Rules" screen.**

- **Property optimization** – Allows you to change the administrative properties of a database. In the application of the predefined SQL Manage default "property optimization" rule, the database is set to a "full recovery model". The model, combined with SQL Manage log backups, automatically allows for the restoration to a specific point in time.
- **Database backup** – Schedules of selected databases everyday at 23:30.
- **Backup 2 / Archive** – The rule is identical to the Database Backup rule and is intended to create a second set of database backup files in a different schedule or location (daily, weekly or monthly).
- **Transaction log backup** – Schedules an operation for backup of the transaction log of selected databases, keeping database modifications. Backups occur everyday, at 6 hour intervals, between 7:00-19:00. That enables the user to restore a database to a specific point in time.
- **Index optimization** – Over time, when no index maintenance is performed the structure of the indexes becomes fragmented and performance is slowed. The index optimization operation occurs every Friday at 20:00, significantly improving database performance. Index optimization enables you to only de-fragment the indexes, or to defrag and rebuild the indexes.
- **Shrink database** – This operation keeps the transaction log file at an optimal size to ensure it doesn't get too large, thus saving on disk space. It also avoids crashes (occurring due to a disk being completely used by log file) and keeps the data base operating faster. The operation has to be executed after the last transaction log backup and before the next database backup. It occurs everyday at 21:30.
- **Update statistics** – SQL Manage improves database performance by keeping statistics on which tables were accessed when and through which routes. It enables Microsoft SQL Server to use those same routes rather than computing routes every time. The operation executes everyday at 04:30.



- **Monitoring** – SQL Manage monitors your databases and servers in the background, and notifies you via email and/or pop-ups of problems that might lead to failures. That occurs in real-time. It's important to note that the "SQL Manage Monitor" must be activated, in order to receive pop-up notifications.

Please follow these instructions to ensure that the "SQL Manage Monitor" is activated:

- Proceed to Start/Programs/SQL Manage and select "SQL Manage Monitor"
- The "SQL Manage Monitor" will appear on the system tray



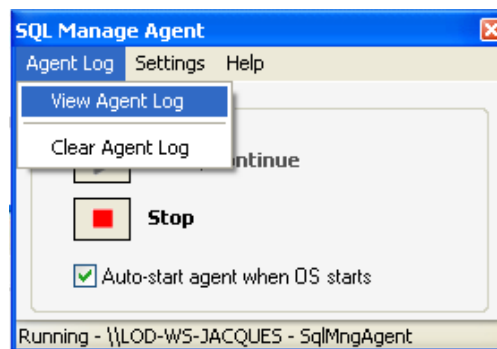
Starting the SQL Manage Agent Service

If you are having difficulties accessing the SQL Server databases, check to ensure the SQL Manage Agent service is running.

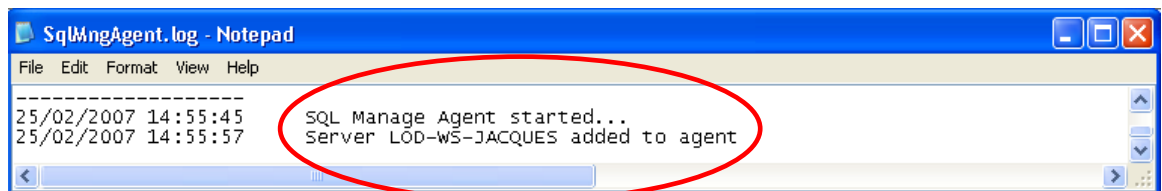
- Proceed to Start/Programs/SQL Manage, and click on "SQL Manage Standard Agent Console"
- The SQL Manage Agent icon on the system tray will turn green if the Agent has successfully started.



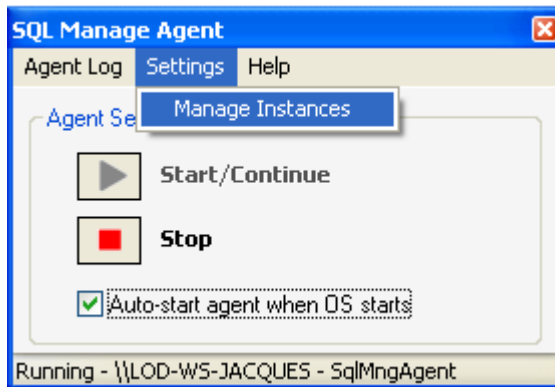
- On the system tray, right click the SQL Manage Agent icon and from the context menu choose "Show Agent Console".
- In the Agent Console, view that the SQL Manage Agent has started. If the status line does not show the text "Running" and a file path (see below), click "Start/Continue" and wait for "Running" to show. Afterwards, on the Agent Log menu click View Agent log.



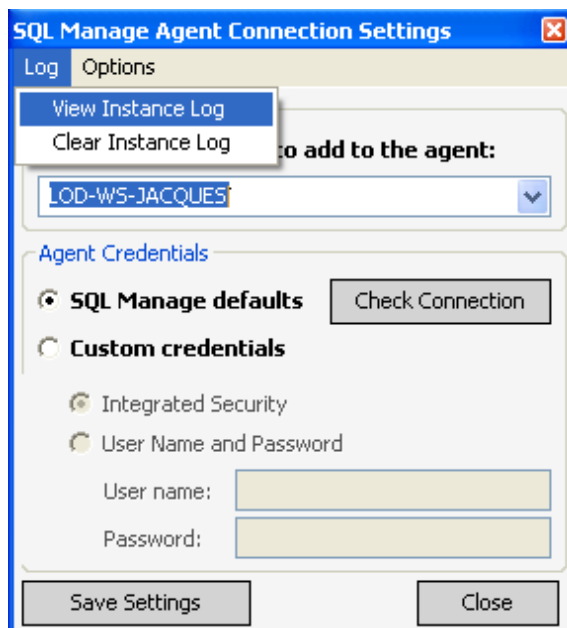
- In the opened log file, make sure that the lines: "SQL Manage Agent Started..." and "Server (Server Name) added to agent" appears.



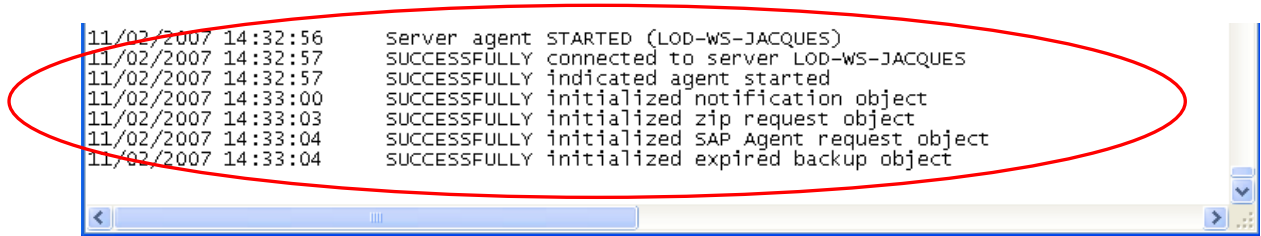
- In the Agent Console go to the Settings menu and choose "Manage Instances".



- In the opened dialog, click "View Instance Log" on the Log menu.

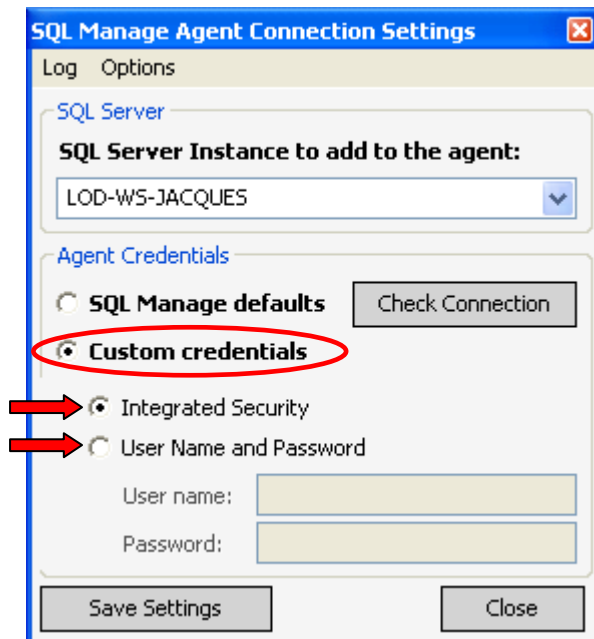


- In the opened log file, make sure that the following 6 lines of successful operations appear:
 - SUCCESSFULLY connected to server [SERVER NAME]
 - SUCCESSFULLY indicated agent started
 - SUCCESSFULLY initialized notification object
 - SUCCESSFULLY initialized zip request object
 - SUCCESSFULLY initialized SAP Agent request object
 - SUCCESSFULLY initialized expired backup object

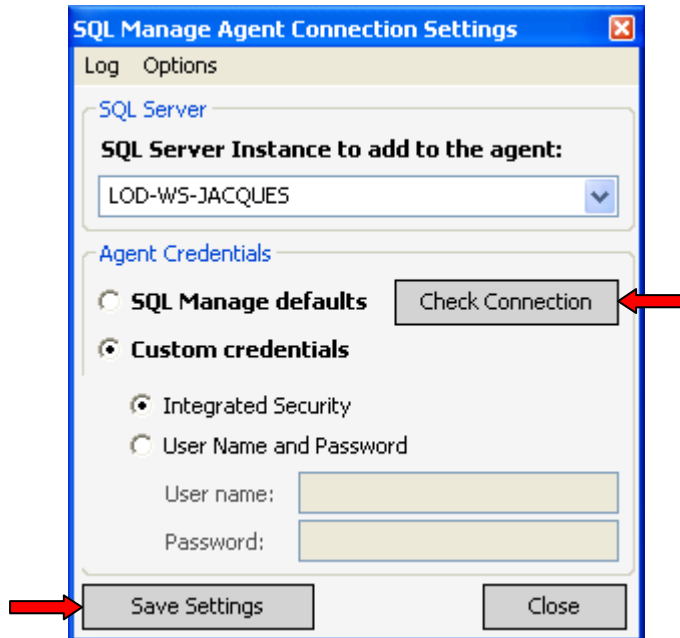


```
11/02/2007 14:32:56 Server agent STARTED (LOD-WS-JACQUES)
11/02/2007 14:32:57 SUCCESSFULLY connected to server LOD-WS-JACQUES
11/02/2007 14:32:57 SUCCESSFULLY indicated agent started
11/02/2007 14:33:00 SUCCESSFULLY initialized notification object
11/02/2007 14:33:03 SUCCESSFULLY initialized zip request object
11/02/2007 14:33:04 SUCCESSFULLY initialized SAP Agent request object
11/02/2007 14:33:04 SUCCESSFULLY initialized expired backup object
```

- In the event of an error, connect to the Microsoft SQL Server with "Custom Credentials" through either "Integrated Security" or "User Name and Password (SA)".



- Proceed to select "Save Settings" and afterwards "Check Connection".



Activating the SQL Manage License

Evaluation

SQL Manage comes with a full functioning 30 day evaluation license. Following the first installation, the 30 day license key will automatically be activated.

Permanent License Key

In order for to generate a permanent license key (once you have purchased SQL Manage), please do the following:

- Open SQL Manage and go to: Help-> Request activation key.
- Step 1: Fill in your details
- Step 2: Press Generate activation request.



SQL Manage Activation Key Request

SQL Manage Activation Key Request

Contact Information

STEP 1: Fill in your contact information

* Company Name:

Contact Name:

* Country:

State:

Phone Number:

* Contact E-mail:

Local Activation Details

STEP 2: [Generate activation request email \(Click Here\)](#).

(Note: If you don't have an email client on this computer [Click Here](#).)

Finish Your Activation Request

STEP 3: Send the activation email.

Activation requests are usually processed within 2 working days. When your process is completed you will receive an email containing your permanent activation key.

For any questions regarding the activation process, please contact us at:

sales@futureitsoft.com or +972 8 925 8175

OK Cancel

Send the generated email to your reseller or to sales@futureitsoft.com. We will then issue a permanent license.

When purchasing more than one SQL Manage license (One license per Microsoft SQL Server instance), please note that the generation of a license key should be done for each of the servers.

Technical Support

For any technical support, please contact us at: support@futureitsoft.com or call in the USA (877) 577-1323 or international +972-8-925-8070